

## Axial Power Inductors - AS0415U SERIES



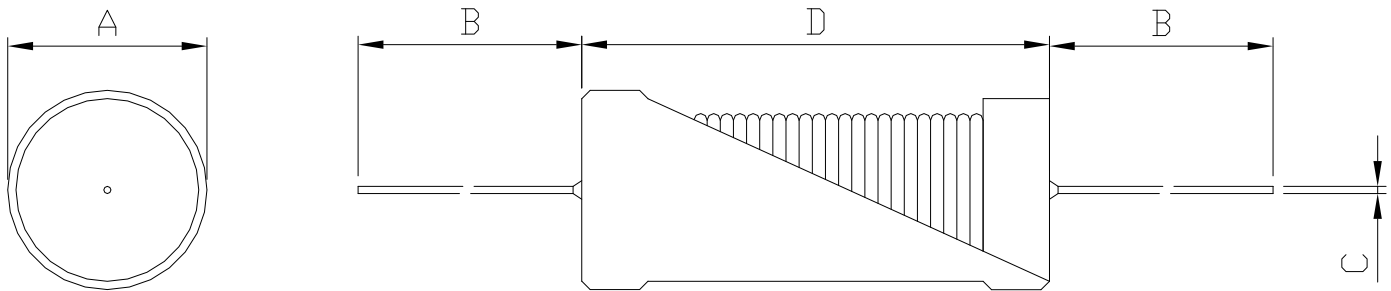
### PART NUMBERING SYSTEM

<b>AS</b>	<b>0415U</b>	—	<b>101M</b>	—	<b>LF</b>
TYPE	DIMENSIONS		INDUCTANCE		LEAD FREE

**U** : UL Tube ; **P** : PVC Tube

### SHAPES AND DIMENSIONS

UNIT : mm



**A=6.0 Max. B=18.0±1.0 C=0.6±0.2 D=17.5 Max.**

### STRUCTURAL DIAGRAM :

COMPONENT	MATERIALS
1.Core	Ferrite core
2.Wire	Polyurethane enameled copper wires
3.Lead wire	Tinned copper wires
4.Tube	Heat shrinkable tube, PVC or UL
5.Glue	Epoxy resin



## Axial Power Inductors - AS0415U SERIES



### SPECIFICATION TABLE

PART NUMBER	INDUCTANCE ( $\mu$ H)	Q (min)	DCR ( $\Omega$ ) (max)	Isat (A) (max)	WIRE (mm)	TEST FREQ. (Freq.)
AS0415U-1R0M-LF	1.0 $\pm$ 20%	85	0.013	5.0	0.60	1KHz/0.25V
AS0415U-2R2M-LF	2.2 $\pm$ 20%	85	0.021	5.0	0.60	1KHz/0.25V
AS0415U-3R3M-LF	3.3 $\pm$ 20%	85	0.026	4.0	0.50	1KHz/0.25V
AS0415U-3R9M-LF	3.9 $\pm$ 20%	95	0.029	4.0	0.50	1KHz/0.25V
AS0415U-4R7M-LF	4.7 $\pm$ 20%	100	0.032	4.0	0.50	1KHz/0.25V
AS0415U-5R6M-LF	5.6 $\pm$ 20%	100	0.036	3.0	0.40	1KHz/0.25V
AS0415U-6R8M-LF	6.8 $\pm$ 20%	105	0.038	3.0	0.40	1KHz/0.25V
AS0415U-7R5M-LF	7.5 $\pm$ 20%	105	0.042	3.0	0.40	1KHz/0.25V
AS0415U-8R2M-LF	8.2 $\pm$ 20%	105	0.046	3.0	0.40	1KHz/0.25V
AS0415U-100M-LF	10 $\pm$ 20%	100	0.054	3.0	0.40	1KHz/0.25V
AS0415U-120M-LF	12 $\pm$ 20%	95	0.080	2.0	0.31	1KHz/0.25V
AS0415U-150M-LF	15 $\pm$ 20%	90	0.092	2.0	0.31	1KHz/0.25V
AS0415U-180M-LF	18 $\pm$ 20%	75	0.110	1.6	0.26	1KHz/0.25V
AS0415U-220M-LF	22 $\pm$ 20%	75	0.135	1.6	0.26	1KHz/0.25V
AS0415U-270M-LF	27 $\pm$ 20%	75	0.292	0.8	0.20	1KHz/0.25V
AS0415U-330M-LF	33 $\pm$ 20%	80	0.335	0.8	0.20	1KHz/0.25V
AS0415U-470M-LF	39 $\pm$ 20%	75	0.373	0.8	0.20	1KHz/0.25V
AS0415U-680M-LF	47 $\pm$ 20%	70	0.488	0.7	0.18	1KHz/0.25V
AS0415U-680M-LF	68 $\pm$ 20%	70	0.600	0.5	0.16	1KHz/0.25V
AS0415U-101M-LF	100 $\pm$ 20%	60	0.830	0.4	0.12	1KHz/0.25V

- Isat : DC current at which the inductance drops 10% (typ) from its value without current.
- Operating temperature range -40°C to +85°C ,
- Electrical specifications at 20°C.